

# KUTJUNGKA PROJECT

BALGO

MULAN

BILLILUNA

KUNDAT DJARU



*The journey so far...*

April 2022




The remote desert communities on the edge of the Tanami Desert have inhabited the Kutjungka region, also known today as the Heart of the Kimberley, for tens of thousands of years. Native title rights to 26,000 square kilometres of Country were recognised in 2001.

Language is still spoken fluently, and communities are proud custodians of the oldest living culture on earth.



**The Kutjungka Project seeks to ensure:**



Local Aboriginal people decide who, when and how services are delivered in their communities - LOCAL DECISIONS FOR LOCAL PEOPLE

Each Community is provided with necessary and appropriate resources in order to address priorities and work towards a better future - OUR FUTURE IN OUR HANDS

Government and government agencies listen to community voice, and consult with communities before actioning or implementing of services or support - NO ABOUT US WITHOUT US

Government and government agencies work in a culturally safe and culturally informed way - CULTURAL AWARENESS IS KEY



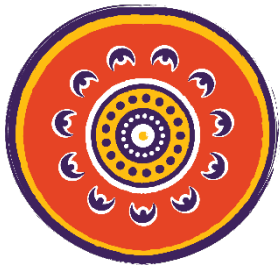
# COMMUNITY NAVIGATORS

## Early Years Surveys

With funding from the Federal Government granted in 2021, Olabud Doogetha was able to launch the Kutjungka Project pilot, employing country men and women as Community Navigators. The role of Community Navigators is to connect members of community with services, identify strengths and weaknesses in current service provision and discover the key concerns and priorities of each community, so as to assist in finding the best way forward.

Surveys were conducted at households in Balgo, Bililuna and Kundat Djaru (Ringer Soak). A survey will be conducted at Mulan in coming months.



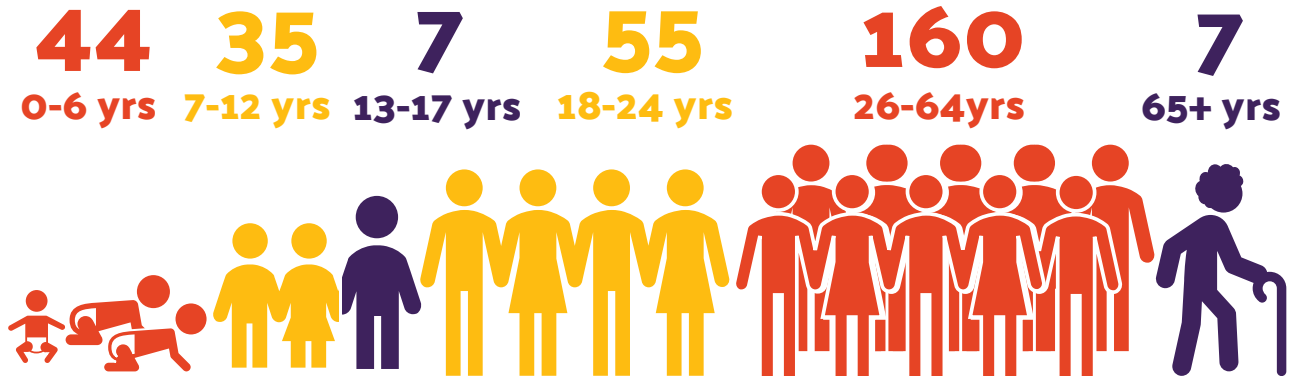


OLABUD  
DOOGETHU

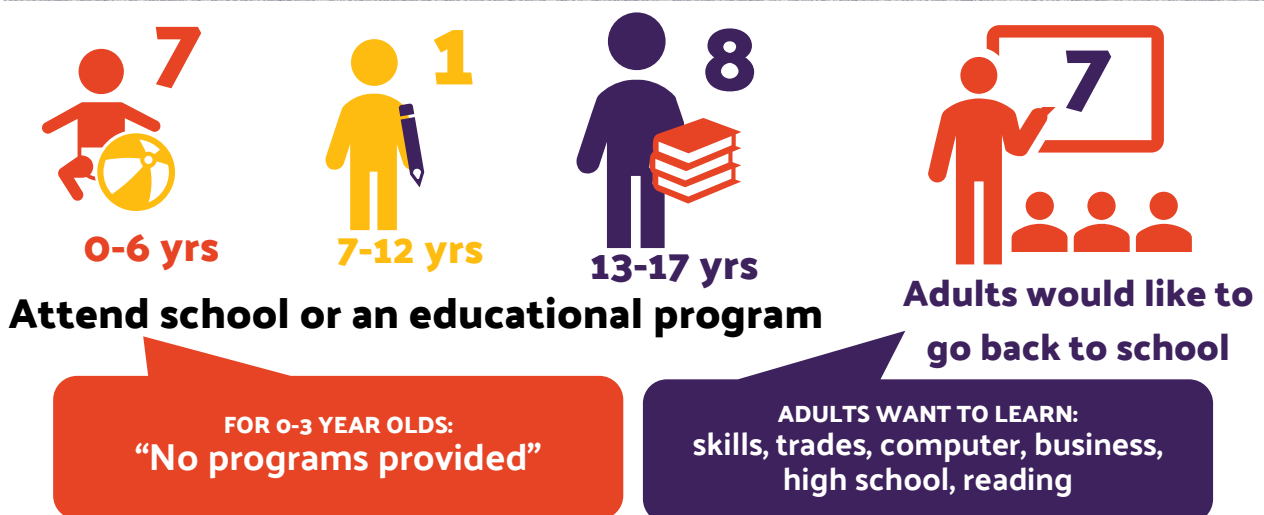
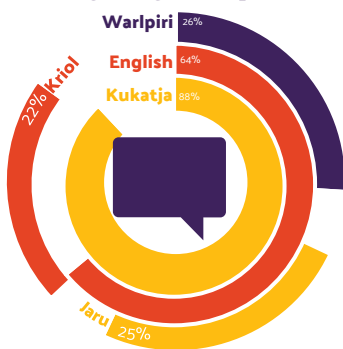
# BALGO

## Early Years Survey

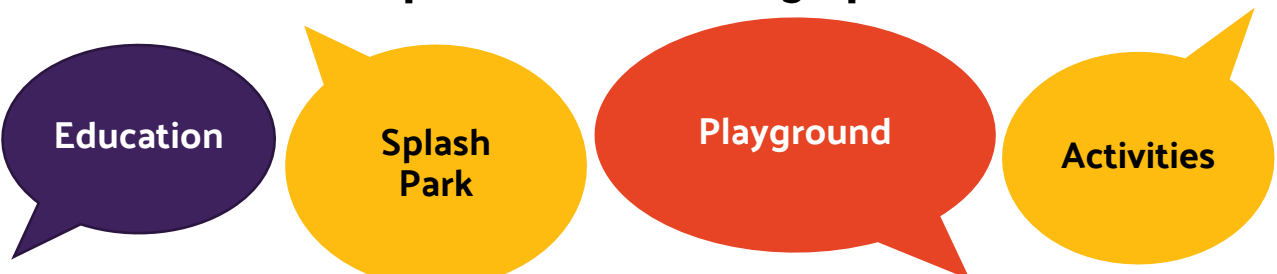
Completed by approximately 74% of households

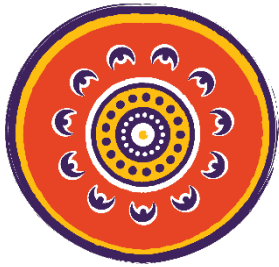


### Languages Spoken



### What's Important for Growing Up Children?





OLABUD  
DOOGETHU

# BILILUNA

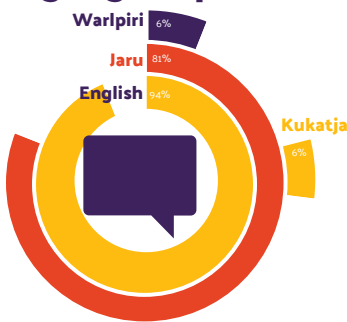
## Early Years Survey

Completed by approximately 32% of households

**10** **13** **4** **9** **24** **2**  
0-6 yrs 7-12 yrs 13-17 yrs 18-24 yrs 26-64 yrs 65+ yrs



### Languages Spoken



**9**  
Households have  
little children

**2**   
Children with  
up-to-date  
Health Checks



**4**  
0-6 yrs



**8**  
7-12 yrs



**6**  
13-17 yrs

**Attend school or an educational program**



**12**  
Adults would like to  
go back to school

FOR 0-3 YEAR OLDS:  
"There is nothing available"

ADULTS WANT TO LEARN:  
skills, trades, language &  
culture

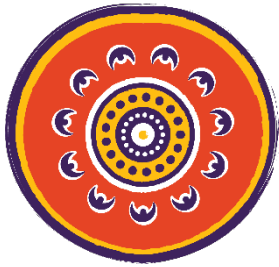
### What's Important for Growing Up Children?

Activities

Education

Culture &  
Language

Playground &  
Water Park

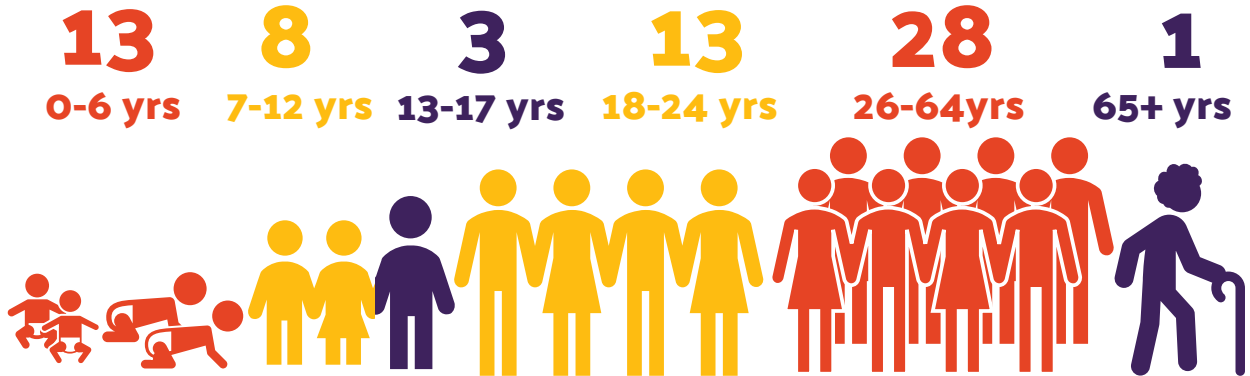


OLABUD  
DOOGETHU

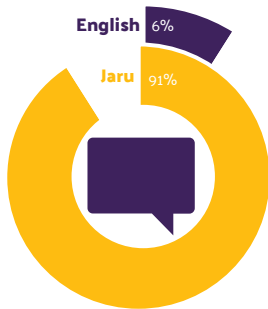
# RINGER SOAK

## Early Years Survey

Completed by approximately 34% of households



### Languages Spoken



Attend school or an educational program

FOR 0-3 YEAR OLDS:  
"No programs available"

ADULTS WANT:  
TAFE Courses

### What's Important for Growing Up Children?

Respect

To go to school

To instil a love for learning



## FOR SERVICE INFORMATION OR MEDIA RELATIONS

cm1@hcshire.wa.gov.au

(08) 9168 6007



### **Olabud Doogethu Aboriginal Corporation**

7 Thomas St, Shire of Halls Creek

Halls Creek, WA, 6770

T: 9168 6007

**W: [olabuddoogethu.org.au](http://olabuddoogethu.org.au)**

E: [cm1@hcshire.wa.gov.au](mailto:cm1@hcshire.wa.gov.au)

FB: Olabud Doogethu