

KUTJUNGKA PROGRAM

BALGO

MULAN

BILLILUNA

KUNDAT DJARU



The journey so far...

April 2022




The remote desert communities on the edge of the Tanami Desert have inhabited the Kutjungka region, also known today as the Heart of the Kimberley, for tens of thousands of years. Native title rights to 26,000 square kilometres of Country were recognised in 2001.

Language is still spoken fluently, and communities are proud custodians of the oldest living culture on earth.



The Kutjungka Program seeks to ensure:



Local Aboriginal people decide who, when and how services are delivered in their communities - LOCAL DECISIONS FOR LOCAL PEOPLE

Each Community is provided with necessary and appropriate resources in order to address priorities and work towards a better future - OUR FUTURE IN OUR HANDS

Government and government agencies listen to community voice, and consult with communities before actioning or implementing of services or support - NO ABOUT US WITHOUT US

Government and government agencies work in a culturally safe and culturally informed way - CULTURAL AWARENESS IS KEY



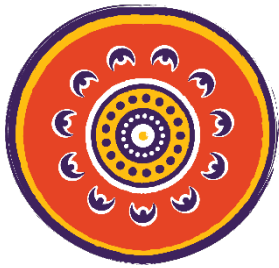
COMMUNITY NAVIGATORS

Early Years Surveys

With funding from the Federal Government granted in 2021, Olabud Doogetha was able to launch the Kutjungka Program pilot, employing country men and women as Community Navigators. The role of Community Navigators is to connect members of community with services, identify strengths and weaknesses in current service provision and discover key concerns and priorities of each community, so as to assist in finding the best way forward.

Surveys were conducted at households in Balgo, Bililuna and Kundat Djaru (Ringer Soak). A survey will be conducted at Mulan in coming months.





OLABUD
DOOGETHU

BALGO

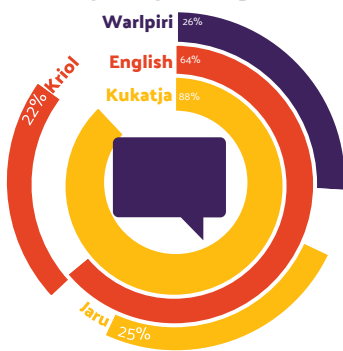
Early Years Survey

Completed by approximately 74% of households

44 **35** **7** **55** **160** **7**
0-6 yrs 7-12 yrs 13-17 yrs 18-24 yrs 26-64 yrs 65+ yrs



Languages Spoken



28
Households have
little children

32 
Children with
up-to-date
Health Checks



7
0-6 yrs



1
7-12 yrs



8
13-17 yrs

Attend school or an educational program



Adults would like to
go back to school

FOR 0-3 YEAR OLDS:
"No programs provided"

ADULTS WANT TO LEARN:
skills, trades, computer, business,
high school, reading

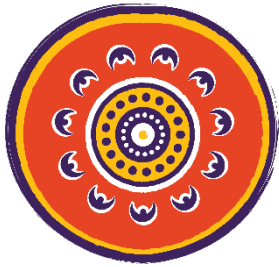
What's Important for Growing Up Children?

Education

Splash
Park

Playground

Activities



OLABUD
DOOGETHU

BILILUNA

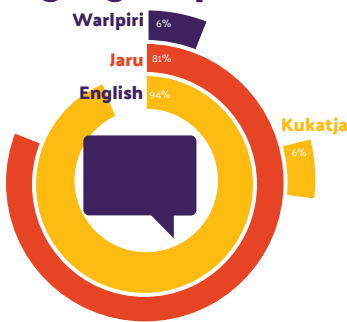
Early Years Survey

Completed by approximately 32% of households

10 **13** **4** **9** **24** **2**
0-6 yrs 7-12 yrs 13-17 yrs 18-24 yrs 26-64 yrs 65+ yrs



Languages Spoken



9
Households have
little children

2
Children with
up-to-date
Health Checks



4
0-6 yrs



8
7-12 yrs



6
13-17 yrs

Attend school or an educational program



Adults would like to
go back to school

FOR 0-3 YEAR OLDS:
"There is nothing available"

ADULTS WANT TO LEARN:
skills, trades, language &
culture

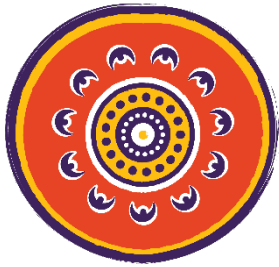
What's Important for Growing Up Children?

Activities

Education

Culture &
Language

Playground &
Water Park

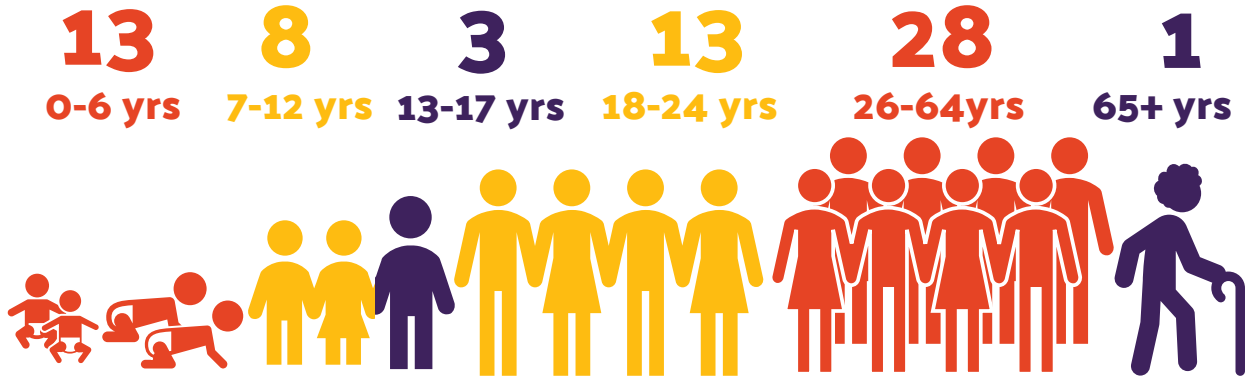


OLABUD
DOOGETHU

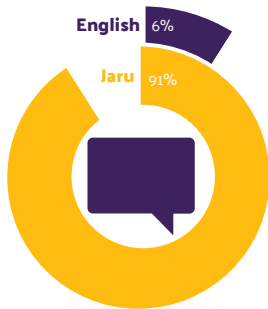
RINGER SOAK

Early Years Survey

Completed by approximately 34% of households



Languages Spoken



Attend school or an educational program

FOR 0-3 YEAR OLDS:
"No programs available"

ADULTS WANT:
TAFE Courses

What's Important for Growing Up Children?

Respect

To go to school

To instil a love for learning



FOR SERVICE INFORMATION OR MEDIA RELATIONS

cm1@hcshire.wa.gov.au

(08) 9168 6007



Olabud Doogethu Aboriginal Corporation

7 Thomas St, Shire of Halls Creek

Halls Creek, WA, 6770

T: 9168 6007

W: olabuddoogethu.org.au

E: cm1@hcshire.wa.gov.au

FB: Olabud Doogethu